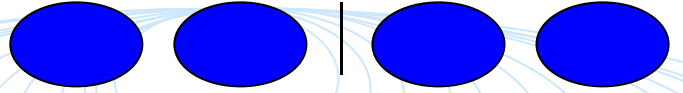
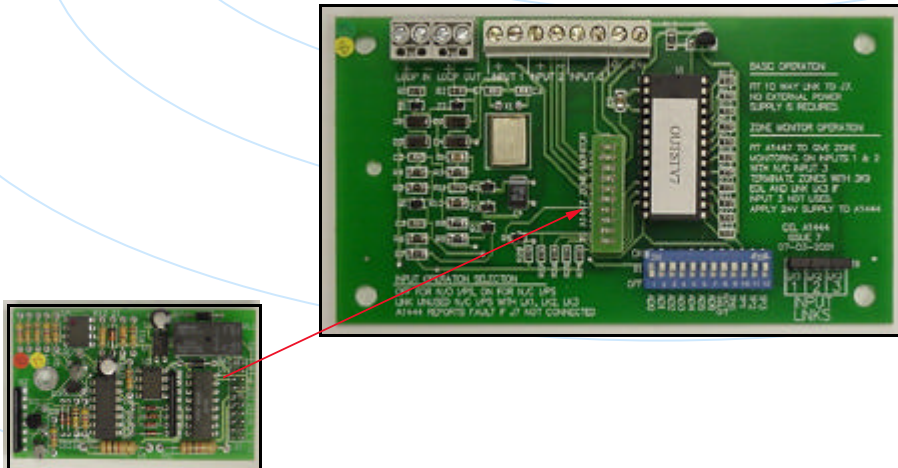


A1444 Addressable Loop Interface



Basic Loop Interface Module For Apollo Protocol Analogue Addressable Control Panels

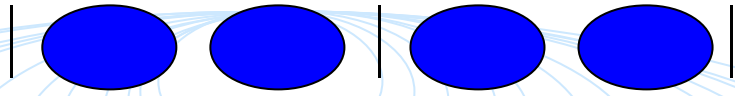


Key Features

- ◆ Ideal for use with all Control Equipment's Apollo protocol analogue addressable control panels
- ◆ Loop powered
- ◆ 3 inputs, prioritised in the protocol
- ◆ Loop terminals with test probe locator
- ◆ Normally Open or Normally Closed input selection
- ◆ Selectable type code options
- ◆ The A1447 Zone Module Adaptor board fits to the motherboard to change two of the inputs to fully monitored circuits
- ◆ The highest quality of design, componentry and manufacture for outstanding durability
- ◆ Uses the latest manufacturing technology to ensure consistency and reliability of product supply

From the UK's leading control panel manufacturer





Introduction

The Control Equipment range of loop interfaces are designed to allow remote monitoring of 3 voltage free contacts via the loop and communicate their status to the panel using analogue values.

The A1444 Basic Interface is a stand alone unit deriving its power from the loop and hence needs no external power supply.

The A1444 can also be used as a zone monitor interfaces with the addition of the A1447 Zone Monitor Unit (and external power supply). This unit plugs onto the A1444 and provides monitoring on Inputs 1 & 2 for fire, fault and quiescent conditions, with Input 3 operating as an auxiliary fault input.

The A1444/47 can also be used to provide remote switch monitoring with fault detection if the inputs being monitored are remote from the interface.

Technical Specifications

Supply Voltage:	17-25V loop derived
Quiescent Current:	1.0mA loop derived
Input Terminals:	Loop connections 3 inputs for voltage free contacts External power supply
Analogue Values:	64 - Input 1 operated 48 - Input 2 operated 4 - Input 3 operated 16 - Quiescent condition

Part Numbers

2500/236	A1444 Basic Interface
2500/246	A1444 Basic Interface Boxed
2500/249	A1444/47 Basic Interface c/w Zone Monitor Unit Boxed
2500/255	A1444/47 Basic Interface c/w Zone Monitor Unit & PSE Boxed
2500/239	A1447 Zone Monitor Unit only

From the UK's leading control panel manufacturer

Control Equipment Ltd, Hillcrest Business Park, Cinderbank, Dudley, West Midlands, DY2 9AP, United Kingdom

Phone: +44 (0)1384 458651 Fax: +44 (0)1384 458972
Email: celsales@controlequipment.co.uk Website: www.controlequipment.com

a1444SL/rev0/10.01